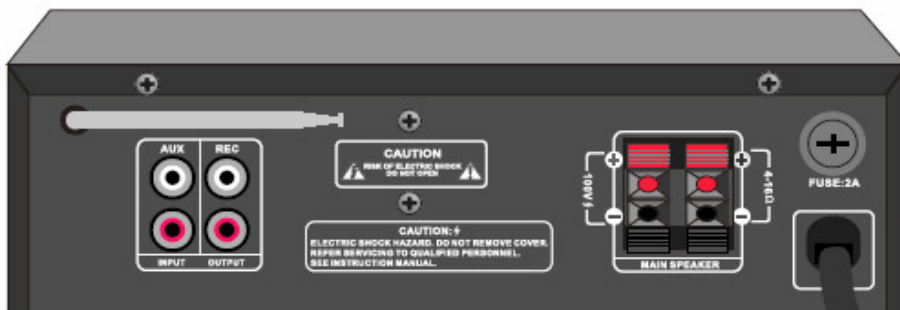




User 'S Manual

PROFESSION POWER AMPLIFIER

Model: WA-130BT



SAFETY PRECAUTIONS!

WARNING-TO REDUCE THE RISK OF FIRE OR ELECTRIC SHOCK, DO NOT EXPOSE THIS UNIT TO RAIN OR MOISTURE.

Do not allow water or liquids to be spilled into this unit. If the unit has been exposed to rain or liquids, please unplug the power cord immediately from the outlet (with dry hand) and get a qualified service technician to check it. Keep this unit far away from heat sources such as radiators, heat registers, stoves, etc.

CAUTION

RISK OF ELECTRIC SHOCK, DO NOT OPEN

**AVIS: RISQUE DE CHOC ELECTRIQUE
NE PAS OUVRIR**



This triangle on your component alerts you to the presence of uninsulated "dangerous voltage" inside the enclosure that may be sufficient to constitute a risk of shock.



This triangle on your component alerts you to important operating and maintaining instructions in this accompanying literature.

CAUTION:

TO REDUCE THE RISK OF ELECTRIC SHOCK, DO NOT REMOVE COVER (OR BACK). NO USER-SERVICEABLE PARTS ARE INSIDE. REFER ALL SERVICING TO A QUALIFIED SERVICE PERSONNEL.

Keep this unit clean by using a soft dry brush and occasionally wiping it with a damp cloth. Do not use any other solvents, which may damage the paint or plastic parts. Regular care and inspection will be rewarded by a long product life and maximum reliability.

This unit was carefully packed at the manufacturing site and the packing box was designed to protect the unit from rough handling. We recommend that you carefully examine the packaging and its contents for any signs of physical damage which may have occurred during transportation.

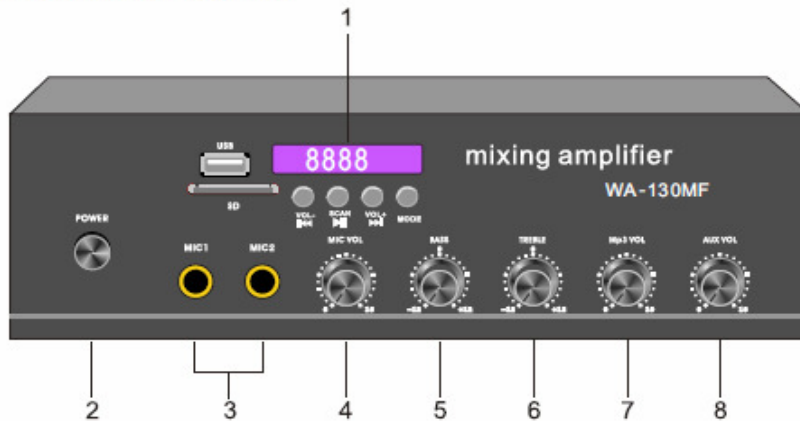
PRECAUTIONS

- ★ Connect the power cord to an right AC outlet as stated in this manual.
- ★ This device falls under protection class I, the ground lead of power cable must be earthed truly. Do not detach the ground from the housing!
- ★ Do not bend, twist, pull or heat the power cord.
- ★ Do not place heavy objects, including this mixer, on top of the power cord. A damaged power cord may cause fire or electrical shock.
- ★ Do not open and modify the unit under any circumstances. Doing so may cause fire or electrical shock. No user-serviceable parts are inside. Refer all servicing to a qualified service personnel.
- ★ If the unit is damaged or functions abnormally, turn off the unit and notify your dealer immediately for repair.
- ★ Never put burning object on the device, such as burning candle.
- ★ Never put object filled with liquid on the device, such as vase etc.
- ★ Do not allow water or liquids to be spilled into this unit.
Liquids inside this unit can cause fire or electrical shock.

FEATURES

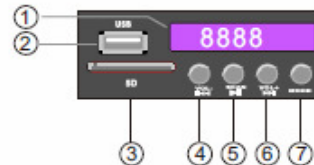
- Two Mic inputs and a group of Aux input
- Treble and bass adjusters on output channel
- Built-in Mp3 player with FM radio and blue tooth
- Short circuit protection
- Spring clip connectors for 4~16ohm output and 100V output
- Power supply: AC220V/50Hz

FRONT PANEL DESCRIPTION



1. Mp3 Player

- (1) The LED window displays working state of player.
- (2) USB socket.
- (3) SD card socket.
- (4) **PREV/VOL-**: In USB or SD playing mode, push this key and release, jump to the previous song and play it; push this key and hold it, decrease the playing volume.
- (5) **Play/pause or Scan**: In USB or SD playing mode, push this key and release, change the player state into playing or pause. In FM radio mode, push this key and hold it, jump to scan channel.
- (6) **NEXT/VOL+**: In USB or SD playing mode, push this key and release, jump to the next song and play it; push this key and hold it, decrease the playing volume.
- (7) **Mode**: Push this key and release, change the playing mode to USB, SD card, FM radio or bluetooth.



2. Power Switch

A button to turn on or off the power supply of this power amplifier.

3. Mic 1&2 Connectors

Connect microphone to these connectors with jack-plug(unbalanced).

4. Mic 1 Or 2 Vol Control

A rotated knob to adjust the volume of the microphone channel signal.

5. Bass Control

A rotated knob to increase or reduce the low frequency of the input signal.

6. Treble Control

A rotated knob to increase or reduce the high frequency of the input signal.

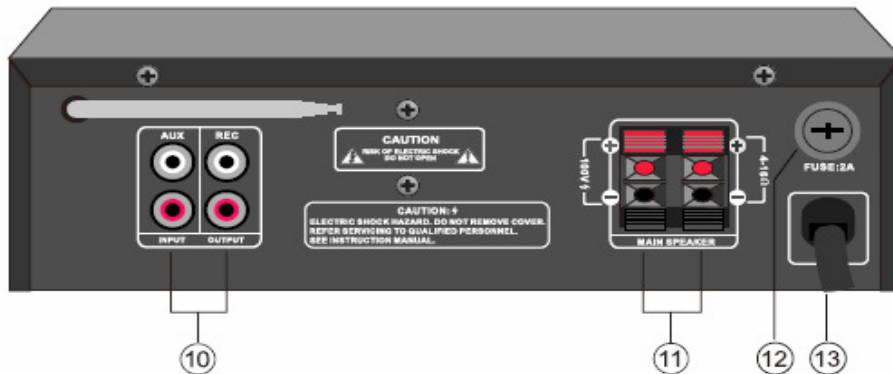
7. Mp3 Vol Control

A rotated knob to adjust the volume of the Mp3 input signal.

9. Aux Vol Control

A rotated knob to adjust the volume of the Aux input signal.

REAL PANEL DESCRIPTION



10. Aux Input And Rec Output Sockets

Connect your LINE-source to Aux Input. The signal can be controlled via the AUX VOL knob. The Rec Output send LINE-level signal to other audio equipment, such as a recorder.

11. Spring Clip Connectors For Speakers 4-16| Output And 100V Output

These 4-16| spring clip connectors for connecting your passive speaker-system which has 4-16| impedance. These 100V spring clip connectors used for a public address power amplifier output.

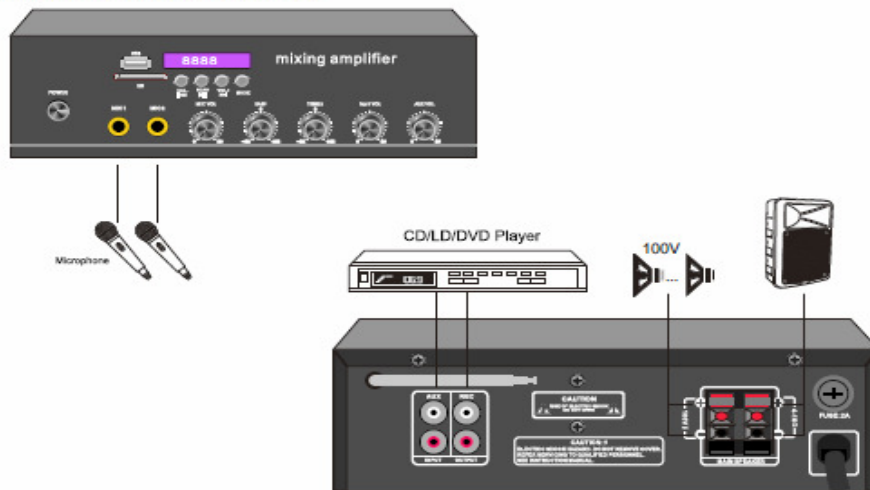
14. Fuse Holder

Only replace the fuse when the device is disconnected from mains. Only use fuses of the same rating and Power.

15. Power Cable

The AC power input decided by client, the voltage may be AC230V~50Hz.

CONNECTION INTRODUCTION



SPECIFICATIONS

Output Power	45W RMS
Frequency response	Mic :-3dB (100Hz~20kHz) Line:-3dB(20Hz~20kHz)
THD at 1kHz	Less than 1%
Input sensitivity	Input 1 Mic :-40dB(10mV) / Input 2 Mic :-40dB(10mV)
Output Interface	Low-impedance output (4,8,16 ohms) / 100V
Signal-to-noise ratio	Mic:>70dB Line:>80dB
Power	AC 220V / 50Hz
Dimensions :W*H*D	240x74x235mm
Weight	2.5 Kg